

## ⚠ WARNING

Failure to follow these warnings and the instructions could result in death or serious injury.

## SUFFOCATION HAZARD Infants have suffocated:

- on pillows, comforters, and extra padding.
- in gaps between a wrong-size mattress, or extra padding and product sides

NEVER add soft bedding or padding.

Use ONLY mattress provided by manufacturer.

Always place baby on back to sleep to reduce the risk of SIDS and suffocation.

Strings can cause strangulation! Do not place items with a string around a child's neck, such as hood strings or pacifier cords. Do not suspend strings over a product or attach strings to toys.

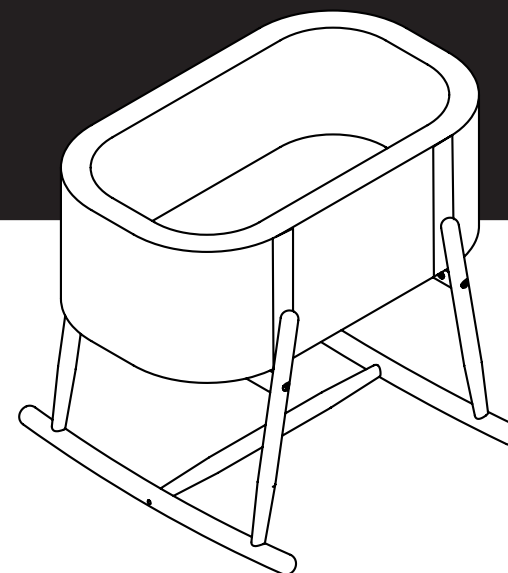
**FALL HAZARD** — To help prevent falls, do not use this product when the infant begins to push up on hands and knees or has reached 8 Kg/18 lb (approximately at 6 months), whichever comes first.

**FALL HAZARD** — Always check that the bassinet is securely locked on the base/stand by pulling upwards on the bassinet bed.



Charlie Crane™

PARIS



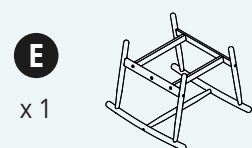
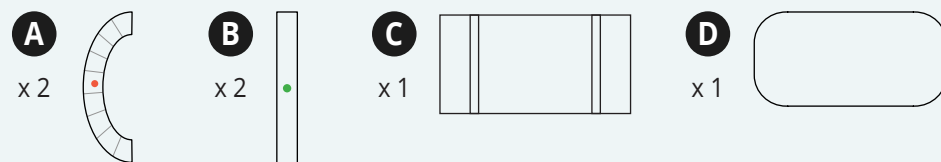
KUKO

**BASSINET**

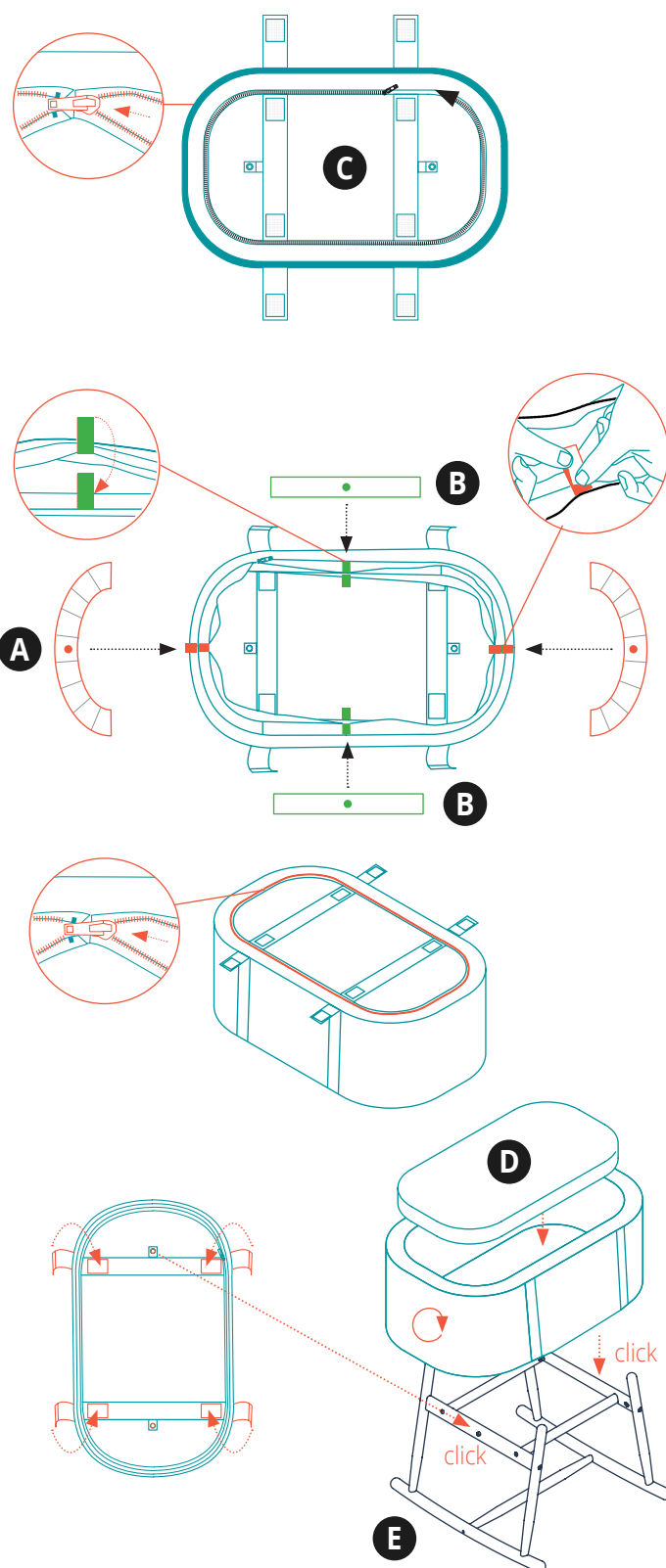
Charlie Crane  
10 bis, rue Bisson - 75020 Paris FRANCE

charliecraneparis.com  
contact@charliecrane.fr

## ASSEMBLY ELEMENTS



Assembly Instructions of KUKO Stand is in the KUKO Stand packaging.



## IMPORTANT!

**Read the instructions carefully before use and keep for future reference.**

The product must be assembled by an adult. Keep disassembled parts out of the reach of children.

### **WARNING: The KUKO BASSINET must be used with its wooden KUKO STAND**

- This product is only suitable for a child who cannot sit up unaided;
- Only use on a firm, horizontal level and dry surface;
- Do not let other children play unattended near the carry cot;
- Do not use if any part of the carry cot is broken, torn or missing;
- Only use spare parts supplied or approved by the manufacturer.
- Only use the mattress sold with this bassinet. Do not add a second mattress to this one. Risk of suffocation.
- Check the stand and bottom of the bassinet regularly for signs of damage and wear.
- Make sure that the child's head in the bassinet is never lower than the child's body.
- Do not place the bassinet near open flames or other sources of high heat.
- Do not use the bassinet or carrier if any part is broken, damaged or missing. Contact Charlie Crane for replacement parts and documentation with instructions if necessary. Do not replace parts.

### **CLEANING AND MAINTENANCE**

The bassinet is removable, remove the cover it is machine washable at 30° delicate program, maximum spinning at 800 rpm, no drying in machine.

### **SAFETY APPROVAL**

This product complies with the safety requirements for sleeping bags: EN 1466:2014 and ASTM F2194-22e1. The mattress complies with EN 16890+A1:2021.

### **PRODUCT INFORMATION**

Dimensions of the assembled bassinet: 29" x 17" x H11". Weight: 3.8 lbs.

### **GUARANTEE**

This product is covered by a 2-year legal warranty against manufacturing defects upon presentation of proof of purchase.